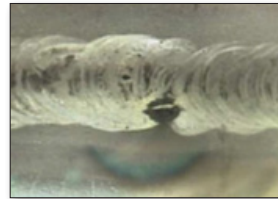


OPTICAL BARREL INSPECTION KIT (GUN BOROSCOPE)



VIDEO ENDOSCOPE - PIPE INSPECTION CAMERA

The video endoscope (gun boroscope) is professional instrument for workshops, installation works and other fields where the visualization of the interior of machines and installations is required as in the industry, biological sectors, archaeological sectors etc.

This device consists of rotating head with camera, complete of cables, command console with computer and joystick. Diameters for inspection: 80-1000 mm.

The device has a dual camera head (0° and 90° DOV) with endless 360° rotating camera head for Remote Visual Inspection (RVI) of orbital welds.

MAIN DATA OF CAMERA HEAD:

- Dimensions in mm: (W) 409x Ø 79
- Weight in kg: 1.2
- Material: anodized aluminium
- Resolution: side view camera: 530 lines, front view camera: (H) 752 x (V) 582 pixel, light sensitive, FOV: 70°, camera modules toggle
- Zoom side view camera: 10x optical / 12x digital zoom (FOV range: 4.6° to 46°)
- Iris & shutter: manual and automatic
- Illumination: 2 x 4 ultra-bright led illumination for side module (manual / auto) | 15 x ultra-bright led illumination for front module (auto)
- Panoramic Scan:
 - endless 360° rotation, digital control, Rotation speed: 0.1° to 90° / sec. , self-levelling automatic keeps the camera head in upright position (positioning dependent to earth-gravitation)
- Working cable length in m: 3 to 50, optional up to 200
- Operating environment
- OPERATING ENVIRONMENT
- Temperature: -10°C to 50°C, recommended range
- Watertight: up to 1.5 m depth of water

FAST INSPECTION RESULTS

Benefit from information of 360° panorama panning shots with endless rotation.

Search and focus always from the tube centre. Survey quickly your whole orbital weld with a wide angle view. Find and secure relevant deviations. Get maximum details even from a greater distance with the 10x optical zoom function.

Using the forward viewing camera, the inspection target is easy to locate and reach. The centring device with a connected push rod is keeping the camera in the center of the tube. Focus at any time during a panoramic scan. Precise camera control with the motorised scan and stop functionality. Save search and inspection time, reduce equipment maintenance costs while improving inspection results.

