

HD 1211A

Image intensifier

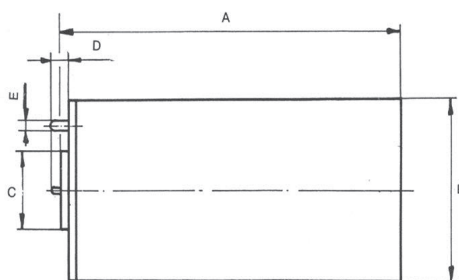
HD1211 is Gen I 3-stage image intensifier with electrostatic focusing. Equivalent label XX1130.

HD1211 incorporates 3 image modules, oscillator and 3 stage cascade. It incorporates S25 photocathode and aluminized phosphor screen. The power supply incorporates automatic brightness control (ABC) to provide a constant output image brightness as light levels varies.

The HD1211 is completely self-contained image intensifier tube encapsulated within a hard surface insulating sleeve.

Performance	Unit	Min.	Max.
Cathode sensitivity 2856°K	$\mu\text{A}/\text{lm}$	300	350
	800 nm mA/W	20	
	850 nm mA/W	15	
EBI	μlux		0.20
Luminous gain at 2×10^{-5} lux	$\text{Cd}/\text{m}^2/\text{lux}$	12700	
Supply current	mA		50
Output uniformity			4 : 1
Limiting resolution	lp/mm	32	
MTF at 7.5 lp/mm	%	65	
16 lp/mm	%	35	
20 lp/mm	%	20	
Photocathode diameter	mm	18	
MTTF	hours	2000	

Picture quality			
Size (μm)	I	II	III
381-500	0	0	0
301-380	0	1	2
231-300	0	3	6
150-230	1	6	10
70-150	3	9	15



Ref	min (mm)	max (mm)
A	145	150
B	52,6	52,8
C		26,8
D	1,6	2,8
E	1,47	1,57

